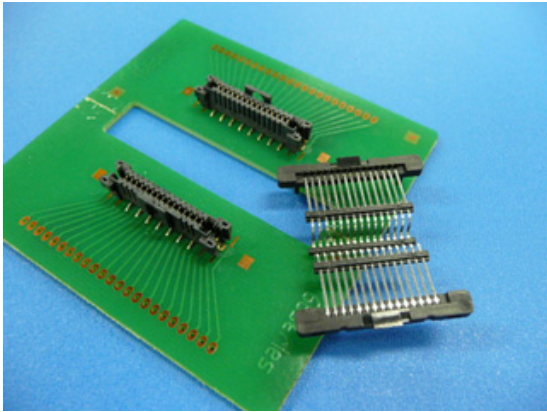


# 466 Series

Board-to-Board | Horizontal (Bridge) Connector | 1.25mm-Pitch Connector



## Product Feature

### 1. 1.25mm pitch horizontal (or bridge)-, and 3-piece-, type of board to board connectors:

It's best fit for combined use with the 273 series and 506 series.

### 2. Abundant variations and ways of usage are possible:

The products are compliant to 1A, and can be used for signal lines as well as power supply.

### 3. Mating between substrates of different levels possible:

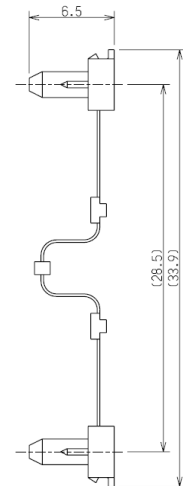
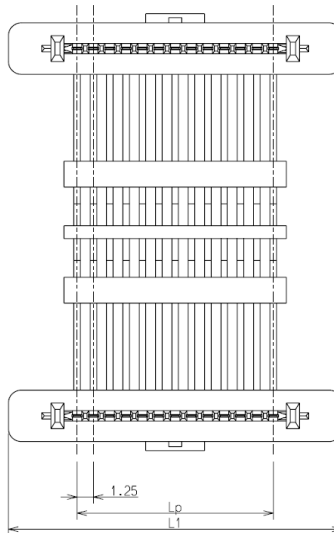
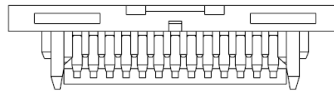
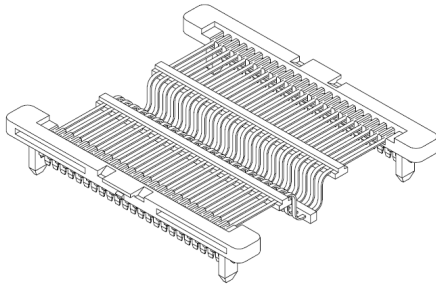
Horizontal mating between substrates located on different levels is possible.

## Specifications

Voltage/Current rating	125V,1A (AC·DC)
Insulation resistance	1,000MΩ MIN.
Contact resistance	50mΩ MAX./P
Withstanding voltage	AC500V (for one minute)
Temperature range	-30°C~+85°C
Insertion force	34.3N MAX. (15pin)
Withdrawal force	9.8N MIN. (15pin)
Materials Plug	Separator:PBT,GF,UL94V-O Terminal:Phosphor bronze,Sn plated

\* The above is combination with 506 series.

## Plug



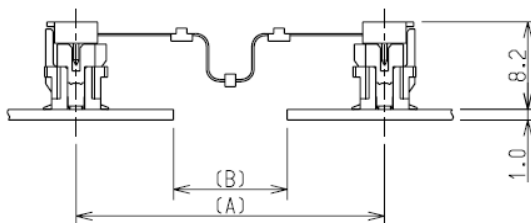
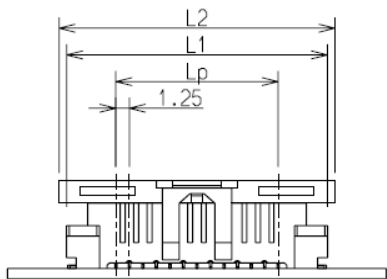
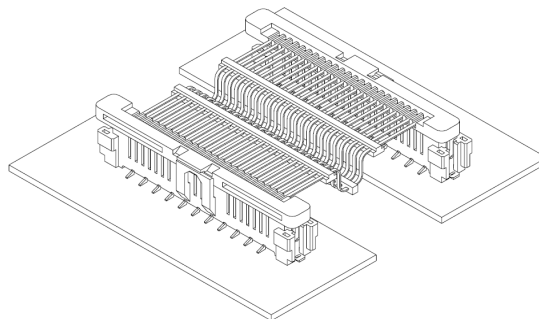
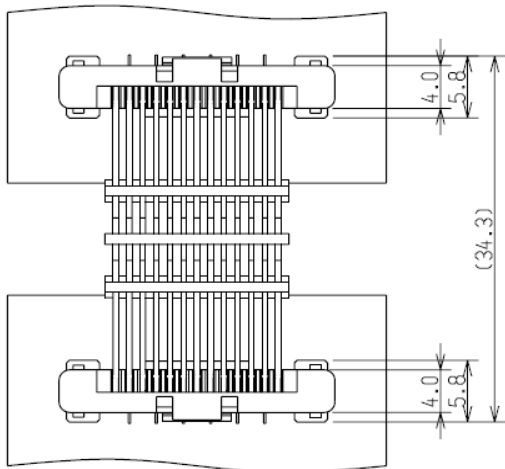
Unit:mm

Poles	Product name	Lp	L1
15	246601215K4	17.5	28.0
23	246601223K4	27.5	38.0

# 466 Series

Board-to-Board | Horizontal (Bridge) Connector | 1.25mm-Pitch Connector

## Engagement diagram(combination with 506 series)



Unit:mm				
Poles	Product name	Lp	L1	L2
15	246601215K4	17.5	26.6	28.0
23	246601223K4	27.5	36.6	38.0

Unit:mm		
	A	B
MAX	29.0	11.0
MIN	27.5	9.5

\* All the figures relative to the product information indicated herein on our website are to represent respective model ranges(or series), and may as well be treated as reference figures only.  
 We take the liberty to call your kind attention to the fact that our products and/or specifications may change without previous notice due to unavoidable circumstances.  
 If you determine to use or adopt a product thereof, we would appreciate you contacting our Sales & Marketing Division for confirmation of the up-to-date specifications for delivery.